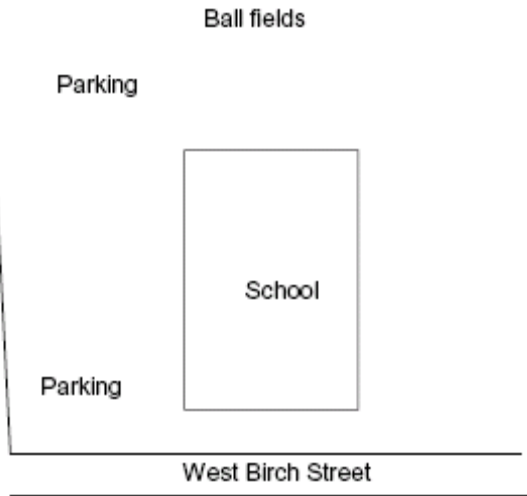
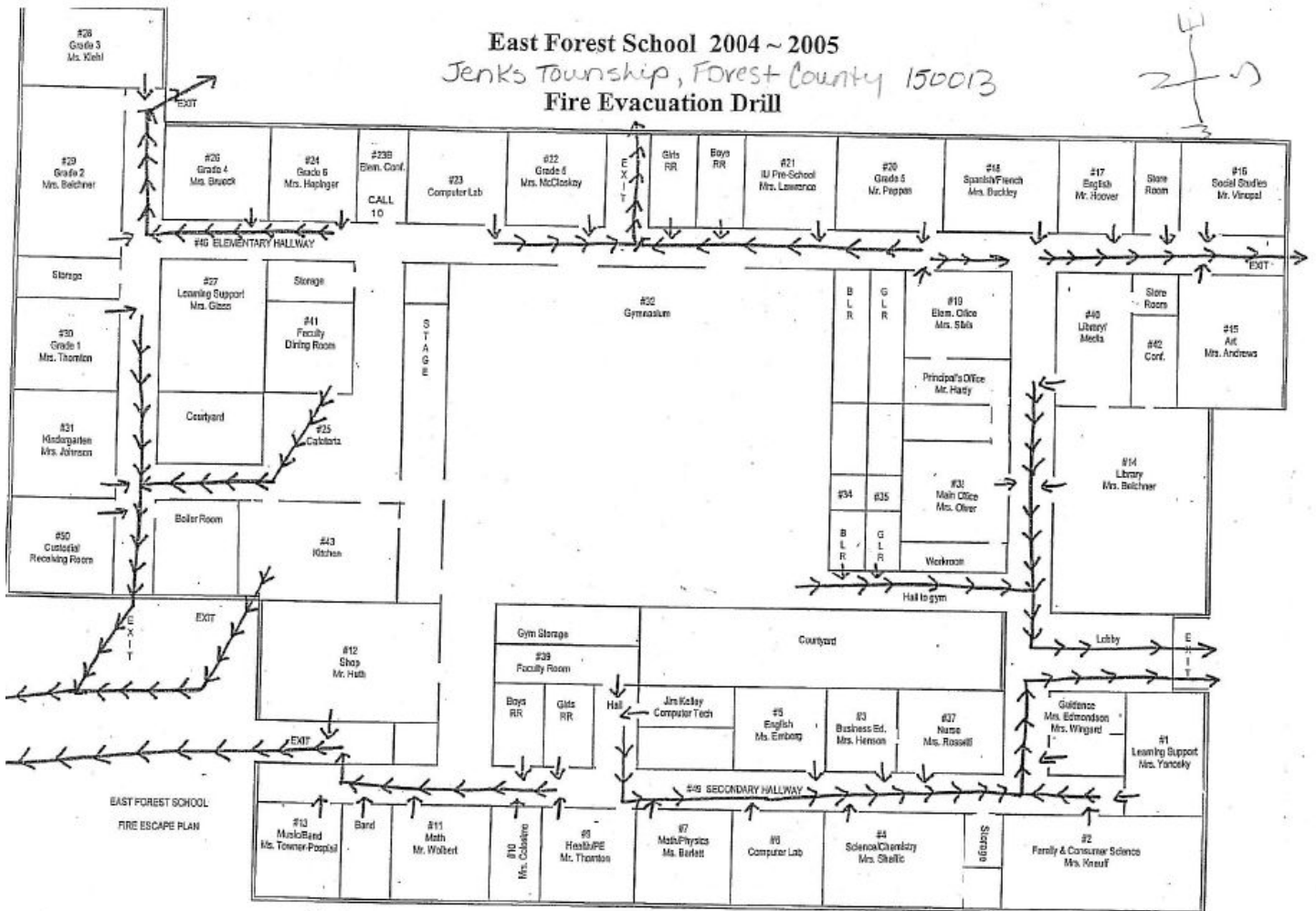


150013 – East Forest School





Site Plan of East Forest School



Floor Plan of East Forest School

150013; East Forest School. This school is located at 120 West Birch Street, Marienville, Pennsylvania in Jenks Township, Forest County. It is part of the Forest Area School District. The 1949 building is set at the southern end of the property, separated from West Birch Street by green space and a crescent-shaped driveway. To the east of the building is green space. To the west of the building are a parking lot and two maintenance garages. Behind the school, at the north end of the property, are play areas including a soccer field, fenced-in basketball/tennis court, playground equipment, and two baseball fields. The modern playground equipment is set in a wood chip lot. The baseball fields each have dugouts. The parking lot is two-tiered, divided by a sloped strip of lawn. The property features scattered trees and bushes, a school sign, and a flagpole.

The 1949 core of the one-story school building is arranged along a linear interior hallway. Later additions between 1949 and 1967, and in 1982, have substantially increased the size of the school. The additions extend to the south and east of the core. Currently the building contains a central gymnasium/auditorium surrounded by classrooms and offices along multiple interior hallways. An interior courtyard is located across from the main entrance and lobby on the south side of the building. The core is a steel and concrete structure clad in brick. The brick walls feature a scattering of darker bricks to form a decorative pattern. The brick walls of the additions are simpler. The whole building sits on a concrete-block foundation. Rubber membrane covers the roof, which is almost all flat except for a shallow-pitch gable-front section at the south end of the school. The building has a brick interior chimney. The current main entrance dates to the 1982 construction project and is oriented towards West Birch Street. It contains multiple modern metal-frame glass doors set into a window wall, inset under the roof of the building. The building is lit by a mix of historic and modern picture and awning windows. Some window walls were bricked-in during the renovations of 1982.

The main lobby features window walls on the north and south sides. The south side is the main entrance to the school. The north side accesses the interior courtyard, which features a raised garden and benches. East and west walls of the lobby are brick. The ceiling is vaulted. The lobby is lit by fluorescent lights. The gymnasium/auditorium was expanded in 1982. It features a wood floor, metal truss ceiling with hanging fluorescent lights, suspended basketball hoops, and rollaway bleachers. A proscenium stage is located at the north end of the room. The cafeteria features tile floors, plaster walls, acoustic ceiling tiles, and hanging fluorescent lights suspended from a metal truss system. Specialized classrooms include, or have included, an industrial shop, computer lab, "family and consumer science" room, art room, and a music/band room.

East Forest School was constructed in 1949 at the edge of the community of Marienville. The school was expanded between the years 1949 and 1967. When heavy snow caused a roof collapse in 1982, the school was again expanded with the addition of new classrooms, a new entryway, and the alteration of the shape and size of the gymnasium. The school services kindergarten through high school students.

Historical information provided by East Forest School.

United States Department of Agriculture

1951 Aerial Photograph APJ-8G-79. Created on July 15, 1951. On file at the Pennsylvania Geological Survey Library, Middletown, Pennsylvania.

United States Geological Survey

1973 *Marienville East, PA Quadrangle*. Topography by photogrammetric methods from aerial photographs taken 1967 and 1968. Field checked 1967. Photorevised 1973. Washington, D.C.

1973 *Marienville West, PA Quadrangle*. 7.5 minute series. Topography by photogrammetric methods from aerial photographs taken 1967 and 1968. Field checked 1967. Photorevised 1973. Washington, D.C.

1993 *Marienville West NE, PA Aerial Photograph*. USGS Reference Number 41079-D2-02-PHT. Created on April 27, 1993.



Aerial View of East Forest School

More Photos of East Forest School

